

- NOTES:**
- For full planting schedule refer to sheet 12 drawing: 'MILT-WSP-00-XX-DR-LA-003012'.
 - For Typical Landscape Details, refer to drawings: 'MILT-WSP-00-XX-DR-LA-003511' to '003513'.
 - For Landscape Intervention Area Sections, refer to: 'MILT-WSP-AR-XX-DR-LA-003101'; 'MILT-WSP-EW-XX-DR-LA-003201'; 'MILT-WSP-WD-XX-DR-LA-003301'; and 'MILT-WSP-KH-XX-DR-LA-003401'.
 - For Landscape Management and Maintenance Plan, refer to document: 'MILT-WSP-00-XX-RP-LA-003901'.
 - For Site Clearance Trees & Vegetation plans refer to: 'MILT-WSP-00-XX-DR-LA-000201' to '000211'.

- HEALTH AND SAFETY SYMBOLS LEGEND**
- INDICATES A RESIDUAL RISK REQUIRING A COMPULSORY ACTION
 - INDICATES A RESIDUAL RISK FOR INFORMATION
 - INDICATES A RESIDUAL RISK REQUIRING A PROHIBITIVE ACTION
 - INDICATES A RESIDUAL RISK AS A WARNING
- POTENTIAL H&S RISKS**
- POTENTIAL CLASH WITH OVERHEAD CABLES WHILE MOVING OR PLANTING TREES
 - UNDERGROUND UTILITIES THROUGHOUT THE SCHEME. RISK OF STRIKING UTILITIES WHEN EXCAVATING TO REMOVE EXISTING VEGETATION OR TO PLANT PROPOSED VEGETATION
 - FALLING OF EXISTING TREE DUE TO LOCAL EXCAVATION
- Notes: For further Health and Safety Information see Designers Risk Management Schedule

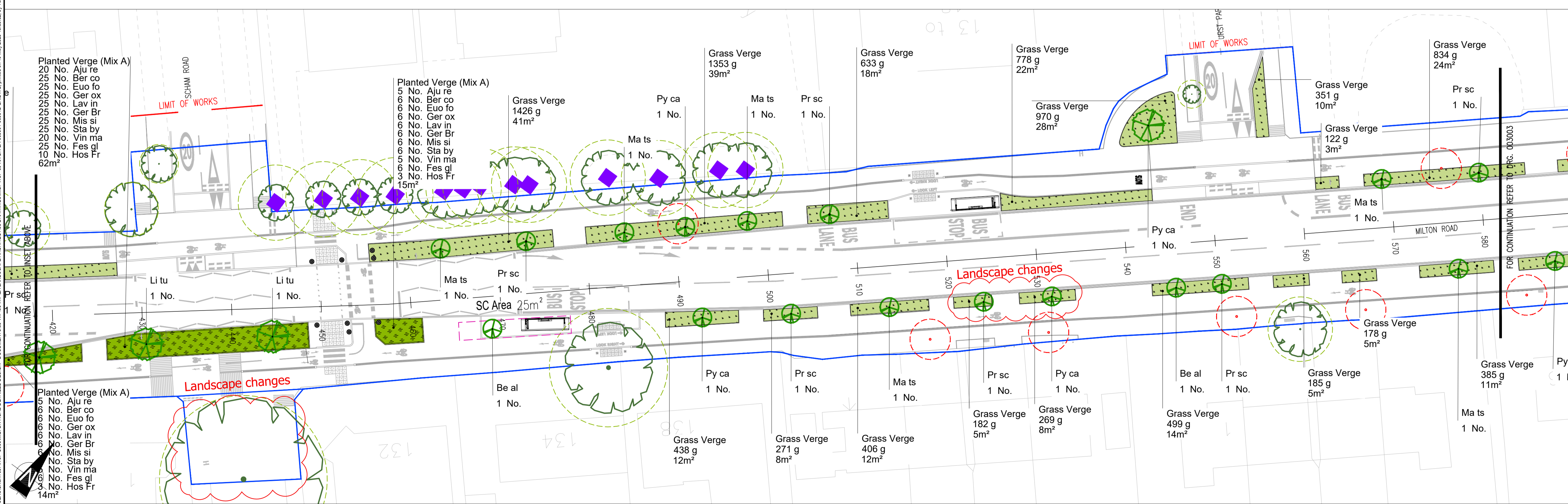
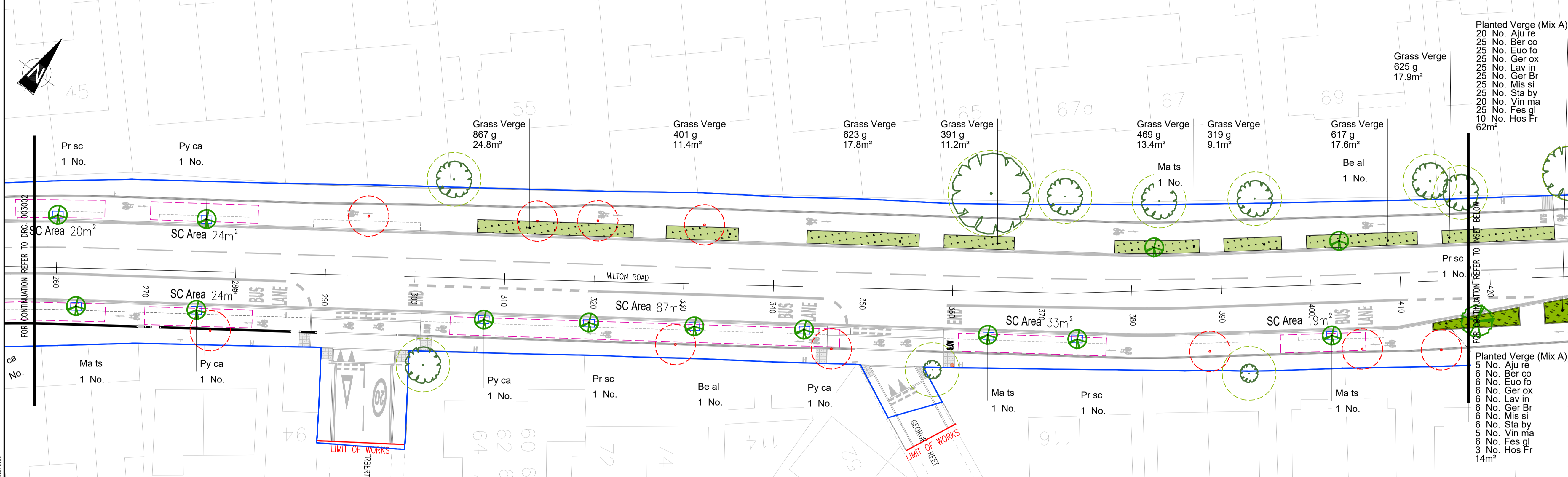
DO NOT SCALE

- KEY**
- Work extents
- PROPOSED SOFT LANDSCAPE**
- Root barriers are to be included to protect utilities in close proximity to trees. Refer to Typical Landscape Details, drawings: 'MILT-WSP-00-XX-DR-LA-003511'. Depth, length, and specification of root barriers may differ in different locations and in relation to utilities. Contractor to ensure sufficient volume of soil for trees is provided whilst protecting each utility by root barriers.
- Tree (16-18cm girth)
 - Tree (20-25cm girth)
 - Ornamental Planting
 - Grass verge
 - Wildflower Meadow Swale
 - Rain garden

- EXISTING SOFT LANDSCAPE**
- Refer to Site Clearance Trees & Vegetation plans: 'MILT-WSP-00-XX-DR-LA-000201' to '000211'.
- Tree to be retained
 - Tree to be removed
 - TPO tree
 - Root Protection Area

- PROPOSED HARD LANDSCAPE**
- For details, refer to drawing: 'MILT-WSP-00-XX-DR-LA-003511'.
- Tree Pit Surface (Size 1). Dimensions: L 1200 x W 900mm. Permeable Resin Bound Gravel framed with aluminium edging. 400mm diameter aperture around tree stem to be in-filled with loose decorative gravel.
 - Tree Pit Surface (Size 2). Dimensions: L 1250 x W 1250mm. Permeable Resin Bound Gravel framed with aluminium edging. 400mm diameter aperture around tree stem to be in-filled with loose decorative gravel.
 - SC Area X m². Extent of Underground Soil Cells (SC) (Total area approx = 568m²). Supplier: Green Blue Urban. Product: RootSpace 400 Upright, Single Plane. Material: 100% recycled polypropylene.

- PROPOSED STREET FURNITURE**
- Bollard. Refer to engineer's drawings: 'MILT-WSP-00-XX-DR-CV-000001' to '000011'.
 - Bus Shelter. Refer to engineer's drawings: 'MILT-WSP-00-XX-DR-CV-000001' to '000011'.
 - Swales & Rain Garden Inlet. For details of swale and rain garden inlet, refer to landscape drawing: 'MILT-WSP-00-XX-DR-LA-003513'.



REV	DATE	BY	DESCRIPTION	CHK	APP
C03	09/05/2023	ST	REVISED LANDSCAPE DESIGN FOLLOWING REVISION TO HIGHWAYS LAYOUT	AK	PT
C02	16/03/2023	ST	REVISED LANDSCAPE DESIGN FOLLOWING REVISION TO HIGHWAYS LAYOUT	AK	PT
C01	01/04/2022	HG	ISSUED FOR CONSTRUCTION	AK	PT
P02	13/11/2020	TE	ISSUED FOR REVIEW	AK	PT
P01	07/10/2020	TE	FIRST ISSUE	AK	PT

DRAWING STATUS: **A - FIT FOR CONSTRUCTION**

62-64 Hills Road, Cambridge, CB2 1LA, UK
T+44 (0) 1223 558 050, F+44 (0) 1223 558 051
wsp.com

CLIENT: **GREATER CAMBRIDGE PARTNERSHIP**

ARCHITECT: **MILTON ROAD DETAILED DESIGN**

SITE/PROJECT: **MILTON ROAD DETAILED DESIGN**

TITLE: **LANDSCAPE GENERAL ARRANGEMENT PLAN SHEET 02 of 12**

SCALE @ A1:	CHECKED:	APPROVED:
1:250	AK	PT
PROJECT NO: 70056482	DESIGNED: TE	DRAWN: TE/HG
		DATE: OCT 2020
DRAWING NO: MILT-WSP-00-XX-DR-LA-003002		REV: C03

© WSP UK Ltd

This drawing may contain: Ordnance Survey data © Crown copyright and database right 2023.